

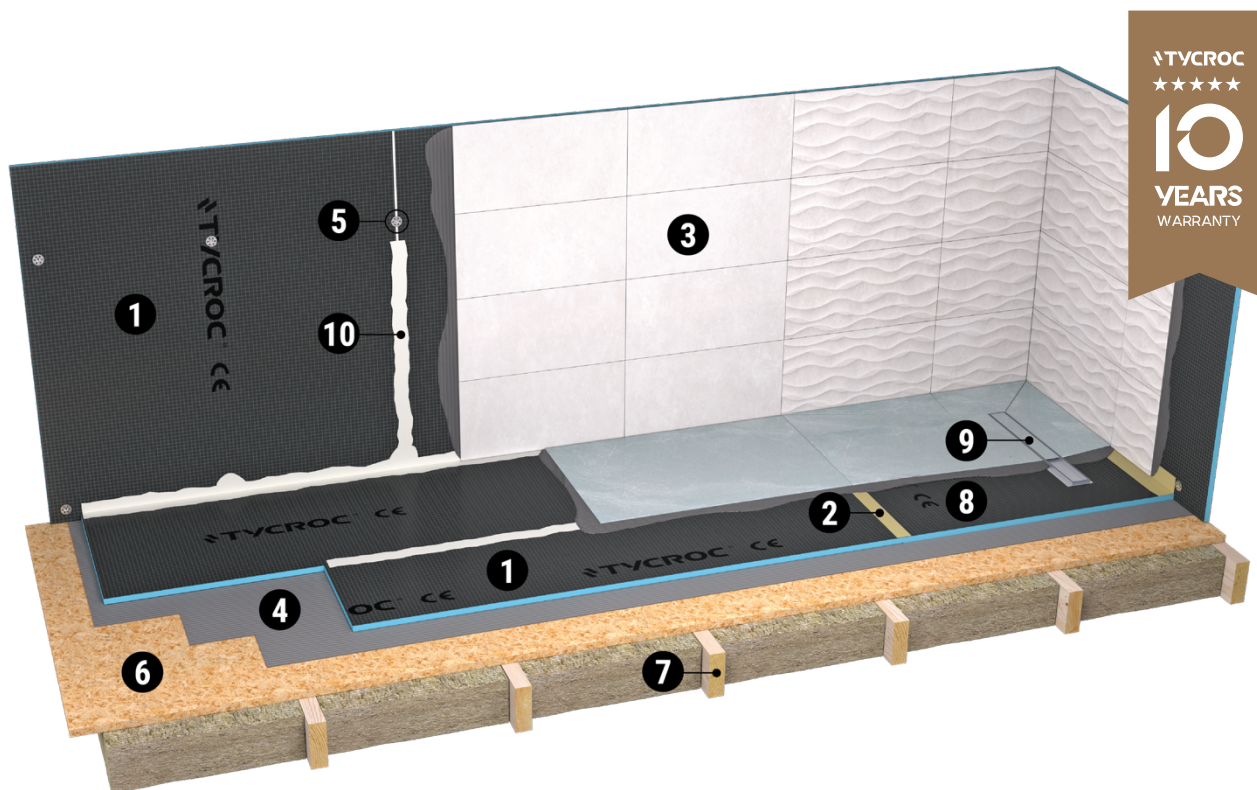


TYCROC® TWP WATERPROOF BUILDING BOARD INSTALLATION INSTRUCTIONS

Updated: 15 May 2026

1. TYCROC WATERPROOFING SYSTEM

The Tycroc waterproofing system covers walls, floors and ceilings with Tycroc waterproof building boards, with the joints, fastening washers and corners bonded and sealed using Tycroc Premium Fix adhesive sealant. The resulting surface is hydrophobic and immediately ready for tiling or other finishing. Alternatively, joints and corners can be covered with waterproofing tape and membrane.



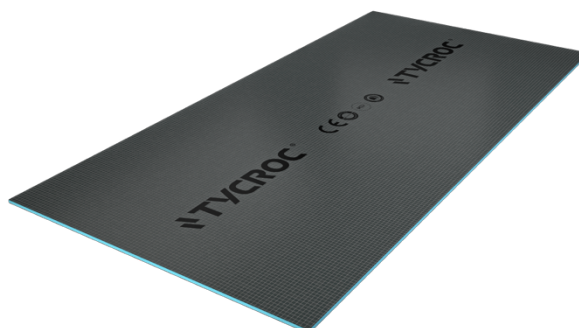
- | | |
|--|---|
| <ol style="list-style-type: none"> 1. Tycroc TWP building board 2. Waterproofing tape and membrane 3. Surface finish (ceramic tile) 4. Flexible tile adhesive 5. Tycroc fastening screw and Tycroc washer | <ol style="list-style-type: none"> 6. Load-bearing subfloor (OSB / plywood) 7. Structure beam 8. Tycroc shower tray 9. Tycroc linear drain 10. Tycroc Premium Fix adhesive sealant |
|--|---|

2. PRODUCT IDENTIFICATION

Product name: Tycroc® TWP

Product type: waterproof building board

PRODUCTS	DIMENSIONS
TWP06	6 × 600 × 1250 mm
TWP12	12 × 600 × 2500 mm
TWP12×L	12 × 1200 × 2500 mm
TWP20	20 × 600 × 2500 mm
TWP20×L	20 × 1200 × 2500 mm
TWP30	30 × 600 × 2500 mm
TWP40	40 × 600 × 2500 mm
TWP50	50 × 600 × 2500 mm
TWP80	80 × 600 × 2500 mm



3. CUTTING AND STORAGE

Tycroc TWP boards are easy to cut using a utility knife (carpet/drywall knife) or an electric circular saw. For drilling holes, stone, metal, or wood drill bits are suitable.

There are no special storage requirements, but it is recommended not to store the boards on edge to prevent potential damage (such as broken corners or edges). Likewise, do not lean the boards diagonally against a wall to avoid bending.

Attention! Slightly damaged edges or corners do not significantly affect the installation process. By applying a slightly greater amount of Tycroc Premium Fix adhesive sealant (see section 10) in such areas, the joint can still be sealed properly.

4. APPLICATION CONDITIONS

Tycroc TWP building boards are suitable for installation on both wooden and metal frames as well as on a rigid, load-bearing substrate that complies with applicable building standards.

The surface must be level, dry, strong, rigid, and stable. It must also be clean, free of dirt, oil, and other contaminants, and must not be frozen. If needed, the substrate should be leveled using appropriate products designed for this purpose.

5. INSTALLATION ON FRAME STRUCTURES (suitable from 12 mm board thickness)

Tycroc TWP building boards can be installed on both wooden and metal framing. Use appropriate Tycroc combi screws and washers (see section 14). Screws/washers should be fixed to the frame at a maximum spacing of 500 mm.

- For 2500 × 600 × 12 mm boards, install the frame at 300 mm intervals.
- For 2500 × 1200 × 12 mm boards, install the frame at 400 mm intervals.
- Boards with a thickness of 20 mm or more are rigid enough for a 600 mm frame interval.
- Boards with a thickness of 50 mm or more can be installed without a supporting frame by fixing the boards at the edges using a frame strap or mounting brackets.

CONSUMPTION RATES

Tycroc fastening screws and washers:

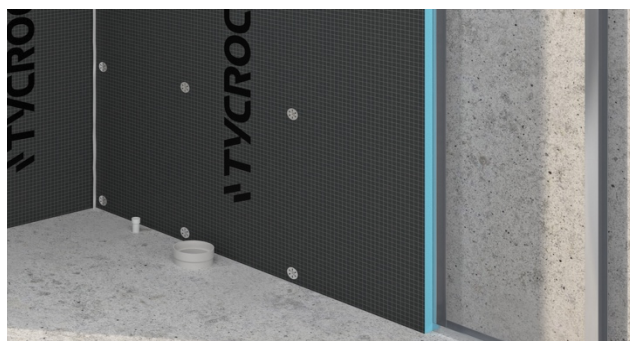
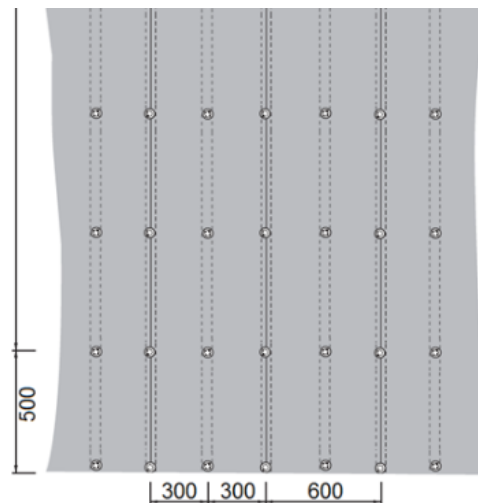
- 10 pcs/sqm – 300 mm frame spacing, 2500 × 600 × 12 mm board;
- 7 pcs/sqm – 400 mm frame spacing, 2500 × 1200 × 12 mm board;
- 7 pcs/sqm – 600 mm frame spacing, 2500 × 600 × 20–80 mm board;
- 5 pcs/sqm – 600 mm frame spacing, 2500 × 1200 × 20 mm board.

Attention! Starting from 20 mm thickness, the board is rigid enough to be installed perpendicularly to the frame – i.e. mounted horizontally on a vertical frame – while still maintaining the appropriate frame spacing for that board thickness. Before installing the next board, apply Tycroc Premium Fix adhesive sealant (see section 10) to the edge of the previous board to bond the boards together and seal the joint.

5.1

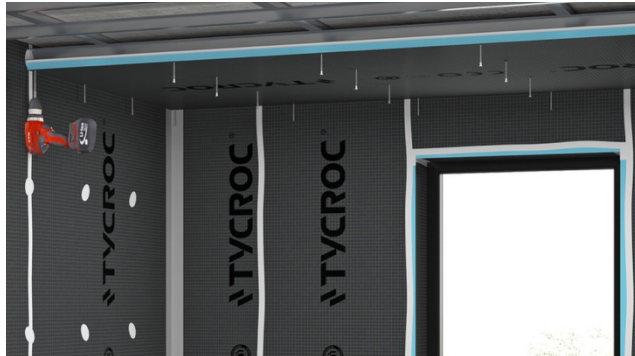
To install Tycroc TWP building boards on a frame, use:

- Tycroc 430 stainless steel 36 × 0,6 mm washers (see section 14).
- Tycroc galvanized combi screws M4 × 35 mm or M4 × 55 mm (see section 14), which are suitable for both metal and wooden frames. Choose screws long enough to penetrate at least 20 mm into the substrate/frame (alternatively, other galvanized or stainless steel screws suitable for the respective frame and Tycroc washers may be used).



5.1.1

When installing on ceilings or in cases where the surface will later be finished with putty and paint, the building boards may be attached to the frame using only Tycroc Premium Fix adhesive sealant (see section 10) and screws – without washers. In such cases, first apply the sealant to the frame or to the corresponding area on the back of the board, then screw the board into place. Note that a 290 ml cartridge yields approx. 8–10 linear meters of adhesive sealant, and a 600 ml cartridge approx. 16–20 linear meters.



5.2

Before installing the next board, apply Tycroc Premium Fix adhesive sealant (see section 10) to the edge of the previous board to bond the boards together and seal the joint.

CONSUMPTION RATES

Tycroc Premium Fix adhesive sealant:

- For 2500 × 600 mm boards – a 290 ml cartridge covers up to 3 sqm, or a 600 ml cartridge up to 6 sqm;
- for 2500 × 1200 mm boards – a 290 ml cartridge covers up to 4,5 sqm, or a 600 ml cartridge up to 9 sqm.



5.3

Seal the joints, corners, and other penetrations between building boards with adhesive sealant, and also cover the fastening washers – using a putty knife.

For sealing pipe penetrations, use Tycroc Premium Fix adhesive sealant or, in the case of oversized openings, a suitable pipe collar and waterproofing compound.



5.4

In shower corners and other areas exposed to direct water contact (wall-to-wall or wall-to-floor corners), we recommend additionally using a suitable waterproofing system (waterproofing fabric / reinforcement tape and waterproofing compound – for tested products see section 12).



5.5

The surface is immediately ready for tiling (for tested products see section 12) or for other types of finishing, following the respective manufacturer's installation instructions.

Most finishing materials intended for such environments are suitable, including ceramic tiles, natural stone, microcement, fillers, paints, plasters, etc.

Attention! We recommend avoiding the application of Tycroc Premium Fix adhesive sealant under porous plasters, as the plasticizers in the sealant may migrate over time and cause visible stains. In such cases, we suggest replacing the adhesive sealant with waterproofing tape, provided that the respective manufacturer does not prohibit its use.



6. INSTALLATION ON LOAD-BEARING WALLS OR CEILINGS USING ADHESIVE (suitable from 6 mm board thickness)

The surface must be level, dry, strong, rigid, stable, and must comply with applicable building standards. It must also be clean, free of dirt, oil, and other contaminants, and must not be frozen. If needed, the substrate should be leveled using appropriate products designed for this purpose.

6.1

Apply a suitable bonding primer to the substrate using a roller or brush (for tested products see section 12).



6.2

Use the double-sided application method, applying a suitable tile adhesive to both the substrate and the back side of the board (for tested products see section 12). Press the board firmly against the wall or ceiling and level it.

For load-bearing wooden substrate walls (such as OSB, plywood, etc.), the boards can also be installed using screws, with appropriate Tycroc combi screws and washers (see section 14). Fasten screws/washers at intervals of no more than 500 mm. Choose screws long enough to penetrate at least 20 mm into the substrate.



CONSUMPTION RATES

Tycroc fastening screws and washers:

- 10 pcs/sqm – 2500 × 600 × 12 mm board;
- 7 pcs/sqm – 2500 × 1200 × 12 mm board;
- 7 pcs/sqm – 2500 × 600 × 20–80 mm board;
- 5 pcs/sqm – 2500 × 1200 × 20 mm board.

6.3

Before installing the next board, apply Tycroc Premium Fix adhesive sealant (see section 10) to the edge of the previously installed board to bond the boards together and seal the joint.

CONSUMPTION RATES

Tycroc Premium Fix adhesive sealant:

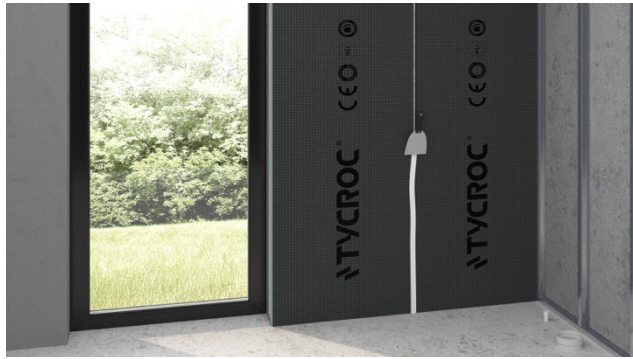
- For 2500 × 600 mm boards – a 290 ml cartridge covers up to 3 sqm, or a 600 ml cartridge up to 6 sqm;
- for 2500 × 1200 mm boards – a 290 ml cartridge covers up to 4,5 sqm, or a 600 ml cartridge up to 9 sqm.



6.4

Seal the joints, corners, and other penetrations between building boards with adhesive sealant, and also cover the fastening washers – using a putty knife.

For sealing pipe penetrations, use Tycroc Premium Fix adhesive sealant or, in the case of oversized openings, a suitable pipe collar and waterproofing compound.

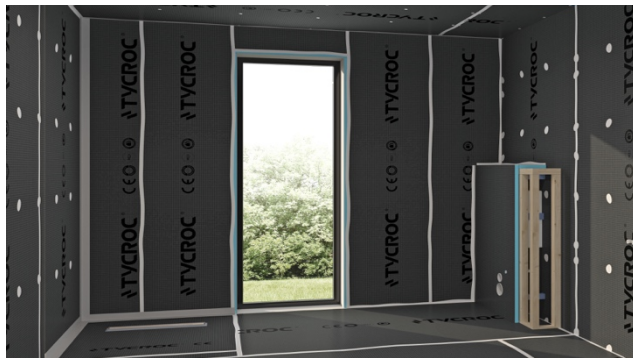


6.5

The surface is immediately ready for tiling (for tested products see section 12) or for other types of finishing, following the respective manufacturer's installation instructions.

Most finishing materials intended for such environments are suitable, including ceramic tiles, natural stone, microcement, fillers, paints, plasters, etc.

Attention! We recommend avoiding the application of Tycroc Premium Fix adhesive sealant under porous plasters, as the plasticizers in the sealant may migrate over time and cause visible stains. In such cases, we suggest replacing the adhesive sealant with waterproofing tape, provided that the respective manufacturer does not prohibit its use.



7. INSTALLATION ON CONCRETE FLOOR

(suitable from 6 mm board thickness)

The surface must be level, dry, strong, rigid, stable, in plane or sloped toward the drain, and must comply with applicable building standards. It must also be clean, free of dirt, oil, and other contaminants, and must not be frozen. If needed, the substrate should be leveled using appropriate products designed for this purpose.

7.1

- a) Using the double-sided bonding method, apply Tycroc Fast Fix acrylic adhesive (see section 11) to the substrate using a B3 notched trowel.
- b) Using the double-sided application method, apply a suitable tile adhesive to both the substrate and the back of the building board. If recommended by the adhesive manufacturer's instructions, apply a suitable bonding primer to the surface beforehand to improve adhesion (for tested products see section 12).



7.2

Place the Tycroc TWP building board onto the floor and press it firmly against the surface, either using your own body weight or by applying additional weight (e.g., a bag of mortar or similar).

7.3

Before installing the next board, apply Tycroc Premium Fix adhesive sealant (see section 10) to the edge of the previous board to bond the boards together and seal the joint.

CONSUMPTION RATES

Tycroc Premium Fix adhesive sealant:

- For 2500 × 600 mm boards – a 290 ml cartridge covers up to 3 sqm, or a 600 ml cartridge up to 6 sqm;
- for 2500 × 1200 mm boards – a 290 ml cartridge covers up to 4,5 sqm, or a 600 ml cartridge up to 9 sqm.

Tip! If you use an additional 5–6 Tycroc metal dowels per board, there is no need to apply extra weight during the adhesive/mortar drying time, making the installation process faster.

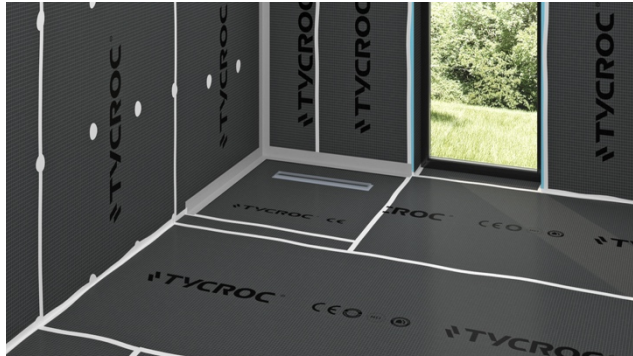
7.4

Seal the joints, corners, and other penetrations between building boards with adhesive sealant, and also cover the fastening washers – using a putty knife.

For sealing pipe penetrations, use Tycroc Premium Fix adhesive sealant or, in the case of oversized openings, a suitable pipe collar and waterproofing compound.

7.5

In shower corners and other areas exposed to direct water contact (wall-to-wall or wall-to-floor corners), we recommend additionally using a suitable waterproofing system (waterproofing fabric / reinforcement tape and waterproofing compound – for tested products see section 12).



7.6

The surface is immediately ready for tiling (for tested products see section 12) or for other types of finishing, following the respective manufacturer's installation instructions.

Most finishing materials intended for such environments are suitable, including ceramic tiles, natural stone, microcement, etc.

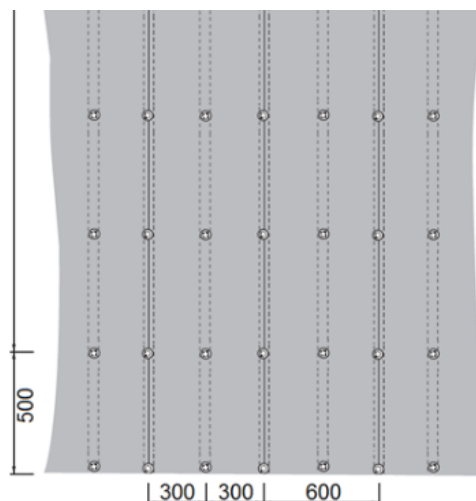


8. INSTALLATION ON WOODEN FLOORS (suitable from 6 mm board thickness)

The surface must be level, dry, strong, rigid, stable, in plane or sloped toward the drain, and must comply with applicable building standards. It must also be clean, free of dirt, oil, and other contaminants, and must not be frozen. If needed, the substrate should be leveled using appropriate products designed for this purpose.

8.1

- a) Apply Tycroc Fast Fix acrylic adhesive (see section 11) to the substrate using a B3 notched trowel.
- b) Use the double-sided application method, applying a suitable tile adhesive to both the substrate and the back side of the building board. If recommended by the adhesive manufacturer's instructions, apply a suitable bonding primer to the surface beforehand to improve adhesion (for tested products see section 12).
- c) When using joists spaced at a maximum of 300 mm, it is permitted to install 50–80 mm thick Tycroc TWP building boards directly onto the joists:
 - apply Tycroc Premium Fix adhesive sealant (see section 10) to the joists, noting that a 290 ml cartridge yields approx. 8–10 linear meters of sealant and a 600 ml cartridge approx. 16–20 linear meters;
 - place the building board onto the joists and press it firmly against the surface;
 - fix the board using suitable wood screws that penetrate at least 20 mm into the joist, along with Tycroc 430 stainless steel 36 × 0,6 mm washers (see section 14) – at a maximum spacing of 500 mm.



8.2

Before installing the next board, apply Tycroc Premium Fix adhesive sealant (see section 10) to the edge of the previous board to bond the boards together and seal the joint.

CONSUMPTION RATES

Tycroc Premium Fix adhesive sealant:

- For 2500 × 600 mm boards – a 290 ml cartridge covers up to 3 sqm, or a 600 ml cartridge up to 6 sqm;
- for 2500 × 1200 mm boards – a 290 ml cartridge covers up to 4,5 sqm, or a 600 ml cartridge up to 9 sqm.

8.3

Seal the joints, corners, and other penetrations between building boards with adhesive sealant, and also cover the fastening washers – using a putty knife.

For sealing pipe penetrations, use Tycroc Premium Fix adhesive sealant or, in the case of oversized openings, a suitable pipe collar and waterproofing compound.

8.4

In shower corners and other areas exposed to direct water contact (wall-to-wall or wall-to-floor corners), we recommend additionally using a suitable waterproofing system (waterproofing fabric / reinforcement tape and waterproofing compound – for tested products see section 12).



8.5

The surface is immediately ready for tiling (for tested products see section 12) or for other types of finishing, following the respective manufacturer's installation instructions.

Most finishing materials intended for such environments are suitable, including ceramic tiles, natural stone, microcement, etc.



9. INSTALLATION OF HEATING CABLES

It is permitted to install heating cables directly onto Tycroc TWP building boards. For this purpose, we recommend using a self-adhesive heating mat to securely fix the cable to the surface of the building boards.

The covering of the heating cable must comply with applicable building standards.

Before applying any compounds or other chemicals over the heating cable, ensure that the product is suitable for such use and always follow the respective manufacturer's instructions (for tested products see section 12).



10. TYCROC PREMIUM FIX ADHESIVE SEALANT

10.1 PRODUCT DESCRIPTION

A neutral, mould-resistant, paintable adhesive sealant based on hybrid polymer technology.

- Free from silicone, isocyanates, and solvents.
- Cures through air moisture, odourless.
- Fast-curing: polymerizes very rapidly within the first few hours after application.
- Excellent sealing properties, can be painted over with acrylic paint.
- High resistance to UV, ageing, and weather conditions.

10.2 APPLICATION AREAS

- Bonding Tycroc building boards to each other or to various surfaces.
- Adhesive applications both indoors and outdoors.
- Suitable for securing mouldings, profiles, insulation materials, decorative panels, and the like.
- Adheres well to metal and other surfaces (e.g. aluminium, galvanized steel, copper, glass, PVC, concrete, wood, brick, stone...).
- Adheres to damp surfaces.
- Chemical resistance: withstands clean, salty, and hard water, water-based household chemicals, and small amounts of hydrocarbons, diluted acids, and alkaline substances.
- The product does not withstand solvents or constant exposure to chlorinated water.

10.3 INSTRUCTIONS FOR USE

- Apply to a clean, dry, and dust-free surface.
- For a cleaner result, use painter's tape if necessary.
- Smooth with soapy water if needed. Press the sealant firmly against the substrate.
- Avoid contact with asphalt or bitumen. Keep away from alcohol-based products (they hinder polymerization). It is the user's responsibility to verify the product's adhesion, chemical properties, and any staining potential on the substrate.

CONSUMPTION RATE:

- A 290 ml cartridge yields approx. 8–10 linear meters of adhesive sealant
- A 600 ml cartridge yields approx. 16–20 linear meters of adhesive sealant

Attention! The Tycroc Premium Fix safety data sheet and technical data sheet are available at www.tycroc.com.

11. TYCROC FAST FIX ACRYLIC ADHESIVE

11.1 APPLICATION CONDITIONS

The product is intended for bonding Tycroc TWP boards to wooden structures (such as boarding, OSB board, plywood, etc.), various building boards (cement fibre board, plasterboard, etc.) and concrete surfaces.

Usage temperature between +18 °C and +25 °C. Relative humidity in the room should not exceed 65%. Prior to bonding, the adhesive and the material to be bonded should reach the same temperature as the floor (+18 °C to +25 °C). Relative humidity of the substrate should be at most 85–90% RH, depending on the material. Protect from moisture if needed.

The product is not suitable for use between two waterproof layers where drying is difficult or not possible. When installing floor or wall covering materials, instructions provided by the respective product manufacturer/seller should always be followed.



11.2 INSTRUCTIONS FOR USE

Preparation: The substrate should be ready for installation, i.e. strong, clean, dry, and free of oil, dust, and grease. Usage conditions should be checked in accordance with effective construction requirements and DIN 18356. Grind cement, concrete and self-levelling substrates as well as uneven, older and unstable substrates until a strong, adherent surface is achieved. After grinding, remove dust from the floor.

Application: Prior to application, the adhesive should be well stirred. Apply the adhesive to the substrate using a notched trowel. Do not use more adhesive than is needed for bonding the flooring. Install the flooring immediately or after a short waiting period. Spread the adhesive well to remove excess air and ensure good contact between the adhesive and the flooring. Best results are achieved by using a flooring roller. Make sure that the entire flooring surface has good contact with the adhesive.

Wet bonding: Apply the adhesive to the surface using a notched trowel. Place the material to be bonded on the wet adhesive. The latest time for wet bonding is up to 20 minutes after applying the adhesive to the surface. Rub the bonded material firmly using a suitable tool.

Double-sided bonding: Apply the adhesive to the surface using a notched trowel. Place the material to be bonded on the wet adhesive, then separate the surfaces and let the adhesive dry for 5–10 minutes before pressing the bonded surfaces together again. When using double-sided contact bonding, it is especially important that the covering is pressed firmly against the surface. When bonding in wet rooms, all joints of the flooring must be sealed watertight.

CONSUMPTION RATE:

one 15 kg bucket covers approximately 25 sqm.

Measured using a B3 notched trowel. (Using a different trowel or bonding different materials may result in a different consumption rate.)

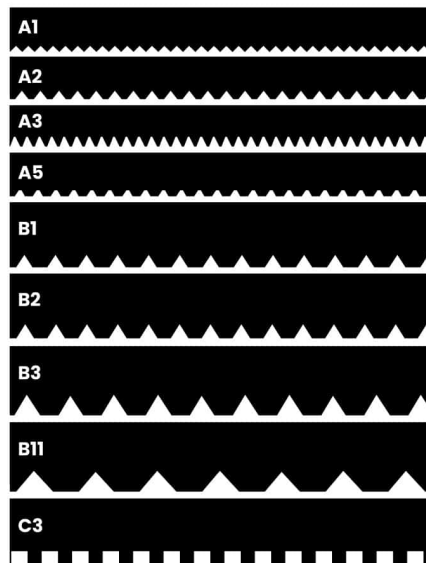
Attention! The Tycroc Fast Fix safety data sheet and technical data sheet are available at www.tycroc.com.

12. TESTED COMPATIBLE PRODUCTS

Ceresit

In cooperation with Henkel Balti OÜ, we have tested the compatibility of Tycroc TWP building boards with the following Ceresit products:

- tile adhesives for bonding Tycroc TWP to concrete – Ceresit CM17, CM29, CM49, CM90;
- tile adhesives for bonding Tycroc TWP to OSB, plywood, plasterboard, or similar building boards – Ceresit CM49;
- bonding primers – Ceresit CN94 or R 766;
- self-levelling compounds – Ceresit CN75 or CN76 + reinforcing mesh;
- waterproofing membranes – Ceresit CL50 or CL51;
- tile adhesives for use over Ceresit waterproofing and levelling compounds – Ceresit CM17, CM29, CM49, CM90;
- tile adhesives for direct use on Tycroc TWP – Ceresit CM49.



Henkel Balti OÜ highlights the following regarding the use of Ceresit products:

- when installing Tycroc TWP with Ceresit products, Ceresit installation instructions must be followed;
- [detailed information can be found in Ceresit product installation guides, technical data sheets, and safety data sheets; if needed, consult Ceresit technical support for additional guidance.](#)



In cooperation with Kiilto Oy, we have tested the compatibility of Tycroc TWP building boards with the following Kiilto products:

- Adhesive/sealing compound: Kiilto Pro XPU
- Waterproofing: Kiilto Fibergum, Kiilto Keramix A+X
- Corner reinforcement tape: Kiilto Corner reinforcement tape

- Pipe penetration reinforcement: Kiilto Pipe penetration reinforcement
- Drain reinforcement: Kiilto Easy Kaivolaippa
- Tile adhesive for fastening and tiling TWP boards: Kiilto Ultra Fix, Kiilto FlexFix, Kiilto FloorFix DF, Kiilto SuperFix DF, Kerapid DF, Kiilto Highflex S2 DF.
- Grout: Kiilto grouts
- Sanitary silicone: Kiilto sanitary silicones

For underfloor heating installation:

- Kiilto Pro Start Primer bonding primer
- Kiilto Termo or Kiilto Plan Craft levelling compound

Kiilto Oy highlights the following regarding the use of Tycroc TWP and Kiilto products:

The substrate must be sufficiently rigid for the surface construction. The board is fastened to the substrate using a suitable Kiilto tile adhesive (notched trowel 6 × 6 × 9 mm) in accordance with the board manufacturer's instructions. The wall-to-floor joint and pipe penetrations are sealed during installation using Kiilto Pro XPU sealant.

Priming before levelling the board
Board surfaces are primed with undiluted Kiilto Pro Start Primer bonding primer. The primer is allowed to dry completely before installing the underfloor heating cables. A separation strip is installed at the wall-to-floor joint to prevent the levelling layer from adhering to the wall structure.

Heating cable
The heating cable or heating mat is fastened to the carefully primed substrate.

Levelling
After installing the boards, levelling is performed using Kiilto Termo or Kiilto Pro Plan Craft levelling compound, which must be at least 5 mm thick over the cable. The waterproofing is then applied according to the manufacturer's instructions.

[Detailed information can be found in Kiilto product installation guides, technical data sheets, and safety data sheets; if needed, consult Kiilto technical support for additional guidance.](#)

ESSVE

TYCROC and ESSVE recommend using the ESSVE SAM board anchor for fastening into Tycroc TWP building boards.



- Tested load capacity per fastening point: 15 kg
- The specified load capacity applies to 12 mm and 20 mm thick material, using ESSVE SAM 5E and 6D anchors respectively

13. LEGAL NOTICE

These installation instructions contain general recommendations and guidelines for constructing various types of structures and installing floor covering materials. For more detailed installation instructions specific to a particular floor covering material or the building board used as an intermediate layer, consult the manufacturer or seller of the respective material. In case of any conflict, always follow the instructions of the respective manufacturer.

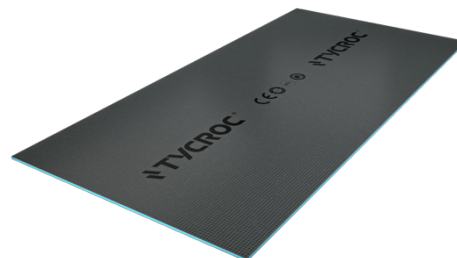
Tycroc OÜ assumes no responsibility in cases where applicable building standards, these installation instructions, or the floor covering material manufacturer's installation instructions have not been followed in constructing the structure. We recommend using qualified professionals for the installation of the products.

The information presented in these installation instructions is based on the knowledge and tests available at the time of compilation. Tycroc OÜ reserves the right to amend the installation instructions without prior notice. Upon publication of new installation instructions, all previous installation instructions for the same product or system are automatically rendered invalid.

14. TYCROC PRODUCTS FOR COMPLETE WET ROOM SOLUTIONS

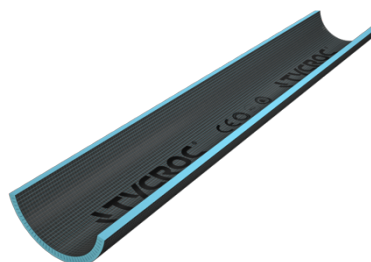
Waterproof building boards

PRODUCTS	DIMENSIONS
TWP06	6 × 600 × 1250 mm
TWP12	12 × 600 × 2500 mm
TWP12×L	12 × 1200 × 2500 mm
TWP20	20 × 600 × 2500 mm
TWP20×L	20 × 1200 × 2500 mm
TWP30	30 × 600 × 2500 mm
TWP40	40 × 600 × 2500 mm
TWP50	50 × 600 × 2500 mm
TWP80	80 × 600 × 2500 mm



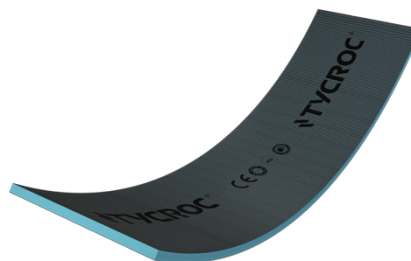
Building boards with longitudinal grooves

PRODUCTS	DIMENSIONS
FXL20	20 × 600 × 2500 mm
FXL30	30 × 600 × 2500 mm
FXL50	50 × 600 × 2500 mm



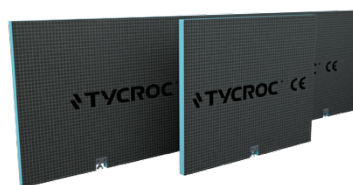
Building boards with transverse grooves

PRODUCTS	DIMENSIONS
FXW20	20 × 600 × 2500 mm
FXW30	30 × 600 × 2500 mm
FXW50	50 × 600 × 2500 mm



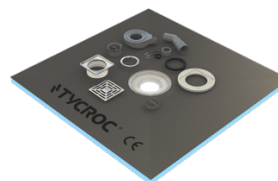
Bath panels

PRODUCTS	DIMENSIONS
BCS30	2100 × 600 × 30 mm
BCH30	770 × 600 × 30 mm



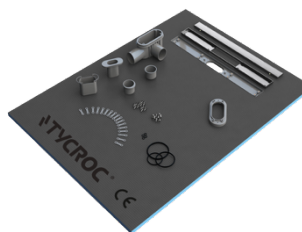
Shower tray with point drainage

PRODUCTS	DIMENSIONS
STC90	900 × 900 × 20 mm
STC100	1000 × 1000 × 20 mm
STO150	1500 × 1000 × 20 mm



Shower tray with linear drainage

PRODUCTS	DIMENSIONS
STL90	900 × 900 × 30 mm
STL100	1000 × 1000 × 30 mm
STL150	1500 × 1000 × 30 mm



Shower tray without drainage

PRODUCTS	DIMENSIONS
ST100	1000 × 1000 × 20 mm



Single slope board

PRODUCTS	DIMENSIONS
SSB1530	1500 × 1000 × 15/30 mm
SSB3045	1500 × 1000 × 30/45 mm



Adhesive sealant

PRODUCTS	DIMENSIONS
Tycroc Premium Fix	290 ml
Tycroc Premium Fix	600 ml



Acrylic adhesive

PRODUCTS	DIMENSIONS
Tycroc Fast Fix	15 kg



Metal dowels

PRODUCTS	DIMENSIONS
MED50 (10 pcs/box)	8 × 50 mm
MED80 (10 pcs/box)	8 × 80 mm
MED110 (10 pcs/box)	8 × 110 mm



430 stainless steel washers

PRODUCTS	DIMENSIONS
MEW50 (50 pcs/box)	36 × 0,6 mm
MEW500 (500 pcs/box)	36 × 0,6 mm



Combi screws

PRODUCTS	DIMENSIONS
MES35 (500 pcs/box)	M4 × 35 mm
MES55 (500 pcs/box)	M4 × 55 mm



