

TYCROC[®] TWP

INSTALLATION INSTRUCTIONS



APPLICATION CONDITIONS

Tycroc TWP building boards / tile backer boards are suitable for installation on both wooden and metal frames, as well as on a rigid, load-bearing substrate that complies with applicable building standards.

When installing Tycroc TWP boards, the underlying surface must be level, dry, strong, rigid, and stable. It should also be clean, free of dirt, oil, or other lubricants, and must not be frozen. If needed, the surface should be leveled using appropriate products designed for this purpose.

CUTTING AND STORAGE

Tycroc TWP boards are easy to cut using a utility knife (carpet/drywall knife) or an electric circular saw. For drilling holes, stone, metal, or wood drill bits are suitable.

There are no special storage requirements, but it is recommended not to store the boards on edge to prevent potential damage (such as broken corners or edges). Likewise, do not lean the boards diagonally against a wall to avoid bending.

Attention! Slightly damaged edges or corners do not significantly affect the installation process. By applying a slightly greater amount of Tycroc Premium FIX adhesive sealant (see product info on page 8) in such areas, it is still possible to seal the joint properly.

1. INSTALLATION ON FRAME STRUCTURES (suitable from 12 mm board thickness)

Tycroc TWP building boards can be installed on both wooden and metal framing. Use appropriate Tycroc combi screws and washers (see page 12). Screws/washers should be fixed to the frame with a maximum spacing of 500 mm.

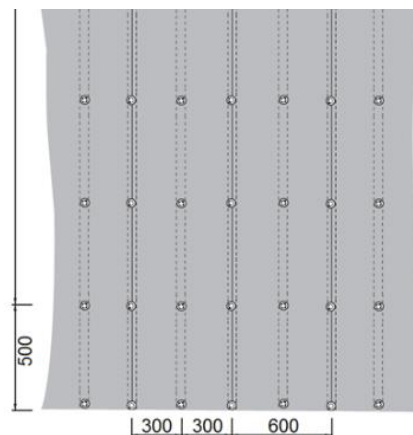
- For 2500x600x12 mm boards, install the frame at 300 mm intervals.
- For 2500x1200x12 mm boards, install the frame at 400 mm intervals.
- Boards with a thickness of 20 mm or more are stiff enough for a 600 mm frame interval
- Boards with a thickness of 50 mm or more can be installed without a supporting frame - fix the boards at the edges using a frame strap or mounting brackets.

CONSUMPTION RATES

Tycroc screws and washers (acc. to the frame spacing and the board):

- 10 pcs/sqm – 300 mm frame spacing, 2500x600x12 mm;
- 7 pcs/sqm – 400 mm frame spacing, 2500x1200x12 mm;
- 7 pcs/sqm – 600 mm frame spacing, 2500x600x20–80 mm;
- 5 pcs/sqm – 600 mm frame spacing, 2500x1200x20 mm.

Attention! Starting from 20 mm thickness, the board is rigid enough to be installed perpendicularly to the frame - i.e., mounted horizontally on a vertical frame—while still maintaining the appropriate frame spacing for that board thickness. Before installing the next board, apply Tycroc Premium FIX adhesive sealant (see product info on page 8) to the edge of the previous board to bond the boards together and seal the joint.



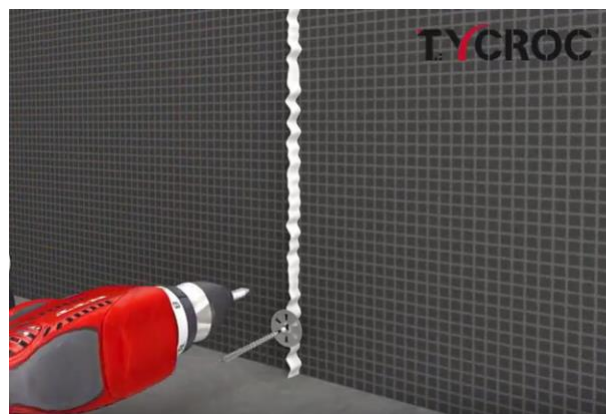
1.1

To install Tycroc TWP building boards on a frame, use Tycroc galvanized combi screws M4x35 mm or M4x55 mm (see page 12), which are suitable for both metal and wooden frames. Choose screws that penetrate at least 20 mm into the substrate or frame. Alternatively, other suitable galvanized or stainless-steel drywall screws may be used.

In addition to the screws, use Tycroc 430 stainless steel 36x0.6 mm washers (see page 12).

1.1.1

When installing on ceilings or in cases where the surface will later be finished with putty and paint, the building boards may be attached to the frame using only Tycroc Premium FIX adhesive sealant (see product info on page 8) and screws - without washers. First, apply the sealant to the frame or to the corresponding area on the back of the board. Then screw the board into place. Note that a 290 ml cartridge yields approx. 8-10 linear meters of adhesive sealant, and a 600 ml cartridge approx. 16-20 linear meters.



1.2

Before installing the next board, apply Tycroc Premium FIX adhesive sealant (see product info on page 8) to the edge of the previously installed board to bond the boards together and seal the joint.

CONSUMPTION RATES

Tycroc Premium FIX adhesive sealant:

- For 2500x600 mm boards – 290 ml cartridge covers up to 3 sqm, or 600 ml cartridge up to 6 sqm;
- For 2500x1200 mm boards – 290 ml cartridge covers up to 4,5 sqm, or 600 ml cartridge up to 9 sqm.



1.3

Seal the joints, corners, and other penetrations between building boards with adhesive sealant, and also cover the fastening washers - using a putty knife.

In shower corners and other areas exposed to direct water contact (wall-to-wall or wall-to-floor corners), additionally use waterproofing compound and waterproofing fabric/reinforcement tape (see tested products on page 9 and 10).



1.4

For sealing pipe penetrations, use Tycroc Premium FIX adhesive sealant. In the case of oversized openings, use a suitable pipe collar and waterproofing compound.

Attention! If Tycroc TWP building boards are used only on walls and ceilings, the floor waterproofing must be done according to the respective manufacturer's installation instructions, with the waterproofing layer extending over the Tycroc TWP board edges.



1.5

The surface is immediately ready for tiling (see tested products on page 9 and 10) or for other types of finishing, following the respective manufacturer's installation instructions.

Most finishing materials intended for such environments are suitable, including ceramic tiles, natural stone, microcement, fillers, paints, plasters, etc.

Attention! We recommend avoiding the application of Tycroc Premium FIX adhesive sealant under porous plasters, as the plasticizers in the sealant may migrate over time and cause visible stains. In such cases, we suggest replacing the adhesive sealant with waterproofing tape, provided that the respective manufacturer does not prohibit its use.



2. INSTALLATION ON LOAD-BEARING WALLS OR CEILINGS USING ADHESIVE (suitable from 6 mm board thickness)

The surface must be flat, dry, strong, rigid, and stable, and must comply with relevant building standards. It should also be clean and free of dirt, oil, and other contaminants, and must not be frozen. If necessary, the substrate must be leveled using appropriate products.

2.1

Apply a suitable bonding primer to the substrate using a roller or brush (see tested products on page 9 and 10).



2.2

Use the double-sided application method, applying a suitable tile adhesive to both the substrate and the back side of the TWP board (see tested products on page 9 and 10). Press the board firmly against the wall or ceiling and level it.

For load-bearing wooden substrates (such as OSB, plywood, etc.), the boards can also be installed using screws, with the appropriate Tycroc combi screws and washers (see page 10). Fasten screws/washers at intervals of no more than 500 mm. Choose screws that penetrate at least 20 mm into the substrate.

CONSUMPTION RATES

Tycroc screws and washers:

- 10 pcs/sqm – 2500x600x12 mm;
- 7 pcs/sqm – 2500x1200x12 mm;
- 7 pcs/sqm – 2500x600x20–80 mm;
- 5 pcs/sqm – 2500x1200x20 mm.



2.3

Before installing the next board, apply Tycroc Premium FIX adhesive sealant (see product info on page 8) to the edge of the previously installed board to bond the boards together and seal the joint.

CONSUMPTION RATES

Tycroc Premium FIX adhesive sealant:

- For 2500x600 mm boards – 290 ml cartridge covers up to 3 sqm, or 600 ml cartridge up to 6 sqm;
- For 2500x1200 mm boards – 290 ml cartridge covers up to 4,5 sqm, or 600 ml cartridge up to 9 sqm.



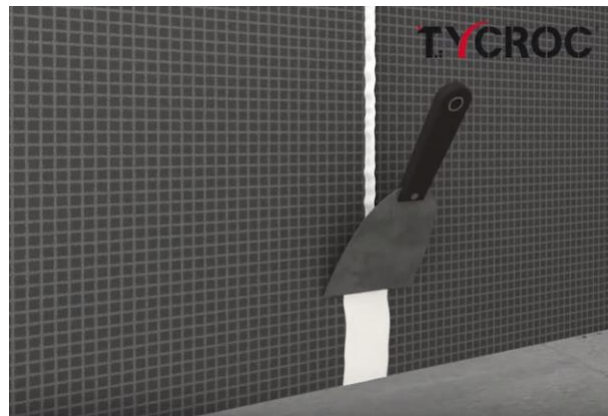
2.4

Seal the joints, corners, and other penetrations between building boards with adhesive sealant, and also cover the fastening washers - using a putty knife.

In shower corners and other areas exposed to direct water contact (wall-to-wall or wall-to-floor corners), additionally use waterproofing compound and waterproofing fabric/reinforcement tape (see tested products on page 9 and 10).

For sealing pipe penetrations, use Tycroc Premium FIX adhesive sealant. In the case of oversized openings, use a suitable pipe collar and waterproofing compound.

Attention! If Tycroc TWP building boards are used only on walls and ceilings, the floor waterproofing must be done according to the respective manufacturer's installation instructions, with the waterproofing layer extending over the Tycroc TWP board edges.



2.5

The surface is immediately ready for tiling (see tested products on page 9 and 10) or for other types of finishing, following the respective manufacturer's installation instructions.

Most finishing materials intended for such environments are suitable, including ceramic tiles, natural stone, microcement, fillers, paints, plasters, etc.

Attention! We recommend avoiding the application of Tycroc Premium FIX adhesive sealant under porous plasters, as the plasticizers in the sealant may migrate over time and cause visible stains. In such cases, we suggest replacing the adhesive sealant with waterproofing tape, provided that the respective manufacturer does not prohibit its use.



3. INSTALLATION ON LOAD-BEARING WALLS USING METAL DOWELS AND MORTAR DOTS (suitable from 20 mm board thickness)

The surface must be dry, strong, rigid, and stable, and must meet the relevant building standards. It must also be clean and free of dirt, oil, and other contaminants, and not frozen.

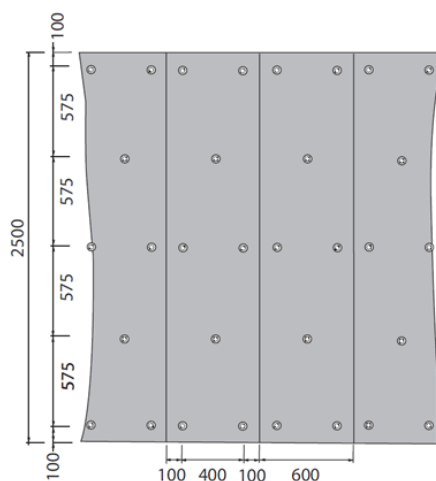
3.1

Follow the mounting point diagram shown on the right. Using a screwdriver, make holes through the Tycroc TWP building board to mark the positions for the metal dowels (see page 12). Ensure that the outermost dowel points are at least 100 mm from the board edges.

CONSUMPTION RATES

Tycroc metal dowels:

- For 2500x600 mm boards, at least 8 metal dowels (holes) are required → approx. 5 pcs/sqm;
- For 2500x1200 mm boards, at least 13 metal dowels (holes) are required → approx. 4 pcs/sqm.



3.2

Place mortar dots (made from tile adhesive) at each designated fastening point (hole), then lift the building board against the wall, press it into place, and level it (see tested products on page 9 and 10).

Allow the mortar dots to partially cure, then drill through the previously marked fastening points (holes) into the wall using an 8 mm masonry drill bit of appropriate length. After drilling, insert Tycroc metal dowels into the wall to ensure the board is securely fixed. Choose metal dowels that penetrate at least 35 mm into the load-bearing wall.

Available Tycroc metal dowel sizes: 8x50 mm, 8x80 mm, 8x110 mm.

3.3

Before installing the next board, apply Tycroc Premium FIX adhesive sealant (see product info on page 8) to the edge of the previously installed board to bond the boards together and seal the joint.

CONSUMPTION RATES

Tycroc Premium FIX adhesive sealant:

- For 2500x600 mm boards – 290 ml cartridge covers up to 3 sqm, or 600 ml cartridge up to 6 sqm;
- For 2500x1200 mm boards – 290 ml cartridge covers up to 4,5 sqm, or 600 ml cartridge up to 9 sqm.

3.4

Seal the joints, corners, and other penetrations between building boards with adhesive sealant, and also cover the fastening washers - using a putty knife.

In shower corners and other areas exposed to direct water contact (wall-to-wall or wall-to-floor corners), additionally use waterproofing compound and waterproofing fabric/reinforcement tape (see tested products on page 9 and 10).

For sealing pipe penetrations, use Tycroc Premium FIX adhesive sealant. In the case of oversized openings, use a suitable pipe collar and waterproofing compound.

Attention! If Tycroc TWP building boards are used only on walls and ceilings, the floor waterproofing must be done according to the respective manufacturer's installation instructions, with the waterproofing layer extending over the Tycroc TWP board edges.

3.5

The surface is immediately ready for tiling (see tested products on page 9 and 10) or for other types of finishing, following the respective manufacturer's installation instructions.

Most finishing materials intended for such environments are suitable, including ceramic tiles, natural stone, microcement, fillers, paints, plasters, etc.

Attention! We recommend avoiding the application of Tycroc Premium FIX adhesive sealant under porous plasters, as the plasticizers in the sealant may migrate over time and cause visible stains. In such cases, we suggest replacing the adhesive sealant with waterproofing tape, provided that the respective manufacturer does not prohibit its use.

4. INSTALLATION ON CONCRETE FLOOR (suitable from 6 mm board thickness)

The surface must be flat, dry, strong, rigid, and stable, and must comply with relevant building standards. It should also be clean and free of dirt, oil, and other contaminants, and must not be frozen. If necessary, the substrate must be leveled using appropriate products.

4.1

- a) Apply Tycroc Fast FIX acrylic adhesive to the substrate using a B3 notched trowel (see product info on page 9).
- b) Use the double-sided application method, applying a suitable tile adhesive to both the substrate and the back of the building board. If recommended by the adhesive manufacturer, first apply a bonding primer to the surface to improve adhesion (see tested products on page 9 and 10).



4.2

Place the Tycroc TWP building board onto the floor and press it firmly against the surface - either using your own body weight or by applying additional weight (e.g., a bag of mortar or similar).

4.3

Before installing the next board, apply Tycroc Premium FIX adhesive sealant (see product info on page 8) to the edge of the previously installed board to bond the boards together and seal the joint.

CONSUMPTION RATES

Tycroc Premium FIX adhesive sealant:

- For 2500x600 mm boards – 290 ml cartridge covers up to 3 sqm, or 600 ml cartridge up to 6 sqm;
- For 2500x1200 mm boards – 290 ml cartridge covers up to 4,5 sqm, or 600 ml cartridge up to 9 sqm.

Tip! If you use an additional 5–6 Tycroc metal dowels per board, there is no need to apply extra weight during the adhesive/drying process, making the installation faster.

4.4

Seal the joints, corners, and other penetrations between building boards with adhesive sealant, and also cover the fastening washers - using a putty knife.

In shower corners and other areas exposed to direct water contact (wall-to-wall or wall-to-floor corners), additionally use waterproofing compound and waterproofing fabric/reinforcement tape (see tested products on page 9 and 10).

For sealing pipe penetrations, use Tycroc Premium FIX adhesive sealant. In the case of oversized openings, use a suitable pipe collar and waterproofing compound.

4.5

The surface is immediately ready for tiling (see tested products on page 9 and 10) or for other types of finishing, following the respective manufacturer's installation instructions.

Most finishing materials intended for such environments are suitable, including ceramic tiles, natural stone, microcement, fillers, paints, plasters, etc.

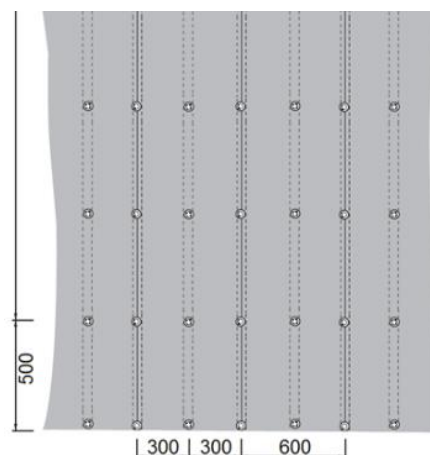


5. INSTALLATION ON WOODEN FLOORS (suitable from 6 mm board thickness)

The surface must be flat, dry, strong, rigid, and stable, and must comply with relevant building standards. It should also be clean and free of dirt, oil, and other contaminants, and must not be frozen. If necessary, the substrate must be leveled using appropriate products.

5.2

- a) Apply Tycroc Fast FIX acrylic adhesive to the substrate using a B3 notched trowel (see product info on page 9).
- b) Use the double-sided application method, applying a suitable tile adhesive to both the substrate and the back side of the building board. If the adhesive manufacturer's instructions recommend it, apply a bonding primer to the surface beforehand to improve adhesion (see tested products on page 9 and 10).
 - When using joists spaced at a maximum of 300 mm, it is permitted to install 2500x600x50-80 mm Tycroc TWP building boards directly onto the joists:
 - Apply Tycroc Premium FIX adhesive sealant to the joists (see product info on page 8); note that a 290 ml cartridge yields approx. 8-10 linear meters of adhesive sealant, and a 600 ml cartridge approx. 16-20 linear meters;
 - Place the building board onto the joists and press it firmly against the surface;
 - Fix the board using suitable wood screws that penetrate at least 20 mm into the joist, along with Tycroc 430 stainless steel 36x0.6 mm washers (see page 12)
 - Screws and washers should be spaced no more than 500 mm apart, i.e., at least 10 pcs/sqm.



5.3

Before installing the next board, apply Tycroc Premium FIX adhesive sealant (see product info on page 8) to the edge of the previously installed board to bond the boards together and seal the joint.

CONSUMPTION RATES

Tycroc Premium FIX adhesive sealant:

- For 2500x600 mm boards – 290 ml cartridge covers up to 3 sqm, or 600 ml cartridge up to 6 sqm;
- For 2500x1200 mm boards – 290 ml cartridge covers up to 4,5 sqm, or 600 ml cartridge up to 9 sqm.

5.4

Seal the joints, corners, and other penetrations between building boards with adhesive sealant, and also cover the fastening washers - using a putty knife.

In shower corners and other areas exposed to direct water contact (wall-to-wall or wall-to-floor corners), additionally use waterproofing compound and waterproofing fabric/reinforcement tape (see tested products on page 9 and 10).

For sealing pipe penetrations, use Tycroc Premium FIX adhesive sealant. In the case of oversized openings, use a suitable pipe collar and waterproofing compound.

5.5

The surface is immediately ready for tiling (see tested products on page 9 and 10) or for other types of finishing, following the respective manufacturer's installation instructions.

Most finishing materials intended for such environments are suitable, including ceramic tiles, natural stone, microcement, fillers, paints, plasters, etc.

6.

INSTALLATION OF HEATING CABLES

It is permitted to install heating cables directly onto Tycroc TWP building boards. For this purpose, we recommend using a self-adhesive heating mat to securely fix the cable to the surface of the building boards.

The covering of the heating cable must comply with relevant building standards.

Before applying any compounds or chemicals over the heating cable, ensure that the product is suitable for such use and always follow the manufacturer's instructions (see tested products on page 9 and 10).



TYCROC PREMIUM FIX – PRODUCT DESCRIPTION

A neutral, mold-resistant, paintable sealant based on hybrid polymer technology.

- Free from silicone, isocyanates, and solvents.
- Cures through air moisture, odorless.
- Fast-curing: begins to polymerize rapidly within the first few hours after application.
- Excellent sealing properties, can be painted over with acrylic paint.
- High resistance to UV, aging, and weather conditions.

TYCROC PREMIUM FIX – APPLICATION AREAS

- Bonding Tycroc building boards to each other or to various surfaces.
- Adhesive tasks both indoors and outdoors.
- Suitable for securing moldings, profiles, insulation materials, decorative panels, etc.
- Adheres well to metal and other surfaces (e.g., aluminum, galvanized steel, copper, glass, PVC, concrete, wood, brick, stone, etc.).
- Adheres to damp surfaces.
- Chemical resistance: withstands clean, salty, and hard water, water-based household chemicals, and small amounts of hydrocarbons, diluted acids, and alkaline substances.
- Not suitable for use with solvents or under constant exposure to chlorinated water.



TYCROC PREMIUM FIX – INSTRUCTIONS FOR USE

- Apply to a clean, dry, and dust-free surface.
- For a cleaner result, mask the edges with painter's tape, if necessary.
- Smooth the sealant with soapy water, if needed, and press it firmly against the surface.
- Avoid contact with asphalt or bitumen. Keep away from alcohol-based products, as they hinder curing.
- It is the user's responsibility to ensure compatibility of adhesion, chemical behavior, and staining potential with the surface.

CONSUMPTION RATES

- One 290 ml cartridge yields approx. 8-10 linear meters of adhesive sealant.
- One 600 ml cartridge yields approx. 16-20 linear meters of adhesive sealant.

Attention! The Tycroc Premium FIX safety data sheet and technical data sheet are available at www.tycroc.com.

TYCROC FAST FIX ACRYLIC ADHESIVE APPLICATION CONDITIONS

Usage temperature between +18 °C and +25 °C. Relative humidity in the room should not exceed 65%. Prior to gluing, the adhesive and the material to be glued should achieve the same temperature as the floor (+18 °C to +25 °C). Relative humidity of the substrate should be 85–90% RH at the maximum, depending on the material. Protect from moisture, if needed. The product is not suitable for use between two waterproof layers where drying is difficult or not possible. Concrete floors and floors made from a levelling compound are recommended to be primed. When installing floor or wall coverings, instructions by the manufacturer should always be followed. With regard to floor heating, the precautions according to the manufacturer of the flooring should always be followed.



TYCROC FAST FIX ACRYLIC ADHESIVE APPLICATION INSTRUCTIONS

Preparation: The substrate should be ready for installation, i.e. strong, clean, dry, and free of oil, dust and fat. Usage conditions should be checked in accordance with effective construction requirements and DIN 18356. Grind cement, concrete and self-levelling substrates and uneven, older and unstable substrates, until a strong, adherent surface is achieved. After grinding, remove dust from the floor.

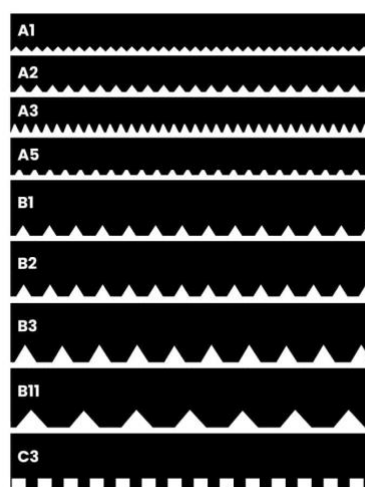
Application: Prior to application, the adhesive should be well stirred. Apply the adhesive to the substrate, by using a trowel. Do not use more adhesive than is needed for gluing the flooring. Install the flooring immediately or after a short waiting period. Spread the adhesive well in order to remove excess air and ensure a good contact between the adhesive and the flooring. Best results are achieved by using a flooring roller. Make sure that the whole flooring surface has a good contact with the adhesive.

Wet gluing: Apply the adhesive by using a trowel. Place the material to be glued on a wet adhesive. The latest time for wet gluing is up to 20 minutes after applying adhesive to the substrate. The glued material should be well rubbed by using a suitable tool.

Double-sided gluing: Apply the glue with a trowel. Place the material to be glued on a wet adhesive, separate the surfaces and let the adhesive dry for 5–10 minutes before connecting the glued surfaces again. When using double-sided contact gluing, it is very important that the cover is pressed strongly against the surface. In wet rooms, all joints of the flooring should be sealed.

CONSUMPTION RATES

- One 15 kg bucket covers approximately 25 sqm, measured using a B3 notched trowel (using a different trowel or bonding different materials may result in a different consumption rate).



Attention! The Tycroc Fast FIX safety data sheet and technical data sheet are available at www.tycroc.com.

Ceresit

In cooperation with Henkel Balti OÜ, we have tested the compatibility of Tycroc TWP building boards with the following Ceresit products:

- Tile adhesives for bonding Tycroc TWP to concrete: Ceresit CM17, CM29, CM49, CM90.
- Tile adhesives for bonding Tycroc TWP to OSB, plywood, plasterboard, or similar substrates: Ceresit CM49.
- Bonding primers: Ceresit CN94 or R 766.
- Self-leveling compounds: Ceresit CN75 or CN76 + reinforcing mesh.
- Waterproofing membranes: Ceresit CL50 or CL51.
- Tile adhesives for use over Ceresit waterproofing and leveling compounds: Ceresit CM17, CM29, CM49, CM90.
- Tile adhesives for direct use on Tycroc TWP: Ceresit CM49.

Henkel Balti OÜ highlights the following regarding the use of Ceresit products:

- When installing Tycroc TWP with Ceresit products, Ceresit installation instructions must be followed;
- Detailed information can be found in [Ceresit product installation guides, technical data sheets, and safety data sheets](#). If needed, consult Ceresit technical support for additional guidance.



In cooperation with Kiilto Oy, we have tested the compatibility of Tycroc TWP building boards with the following Kiilto products:

- Tile adhesives for bonding Tycroc TWP to concrete: Kiilto Ultra Fix, FlexFix, FloorFix DF, Superfix DF, or Kerapid DF.
- Tile adhesives for bonding Tycroc TWP to OSB, plywood, plasterboard, or similar substrates: Kiilto HighFlex S2 DF.
- Bonding primers: Kiilto Fibergum or Keraprimer.
- Self-leveling compounds: Kiilto Termo, Plan Rapid + reinforcing mesh.
- Waterproofing systems: Kiilto XPU + Fibergum, Keramix A + X, Kerasafe+.
- Tile adhesives for use over Kiilto waterproofing and leveling compounds: Kiilto Ultra Fix, FlexFix, FloorFix DF, Superfix DF, or Kerapid DF.
- Tile adhesives for direct use on Tycroc TWP: Kiilto Ultra Fix, FlexFix, FloorFix DF, Superfix DF, or Kerapid DF.

Kiilto Oy highlights the following regarding the use of Kiilto products:

- When installing Tycroc TWP with products, Kiilto installation instructions must be followed;
- Keraprimer should be diluted with water in a 1:1 ratio;
- The minimum layer thickness for leveling compound is 12 mm;
- Detailed information can be found in [Kiilto product installation guides, technical data sheets, and safety data sheets](#). If needed, consult Kiilto technical support for [additional guidance](#).

ESSVE

TYCROC and ESSVE recommend using the ESSVE SAM drywall anchors for fastening into Tycroc TWP building boards.



- Tested load capacity per fastening point: 15 kg.
- The specified load capacity applies to 12 mm and 20 mm thick Tycroc TWP boards, using ESSVE SAM 5E and 6D anchors, respectively.

Attention! The installation instructions provided above are general recommendations and guidelines for constructing various substrates and installing floor covering materials. For detailed installation instructions specific to a particular floor covering material or the use of a building board as an intermediate layer, consult the manufacturer or seller of the respective product. In case of contradictions, always prioritize and follow the instructions provided by the product manufacturer. Tycroc OÜ assumes no responsibility if relevant building standards are not adhered to, the installation instructions above are not followed, or the instructions of the floor covering material manufacturer are disregarded. We strongly recommend employing qualified professionals for the installation of all products to ensure proper execution and compliance with applicable standards.

TYCROC PRODUCTS FOR COMPLETE WET ROOM APPLICATIONS

Waterproof building boards

PRODUCTS	DIMENSIONS
TWP06	1250x600x6 mm
TWP12	2500x600x12 mm
TWP12XL	2500x1200x12 mm
TWP20	2500x600x20 mm
TWP20XL	2500x1200x20 mm
TWP30	2500x600x30 mm
TWP40	2500x600x40 mm
TWP50	2500x600x50 mm
TWP80	2500x600x80 mm



Flexible boards with longitudinal grooves

PRODUCTS	DIMENSIONS
FXL20	2500x600x20 mm
FXL30	2500x600x30 mm
FXL50	2500x600x50 mm



Flexible boards with transverse grooves

PRODUCTS	DIMENSIONS
FXW20	2500x600x20 mm
FXW30	2500x600x30 mm
FXW50	2500x600x50 mm



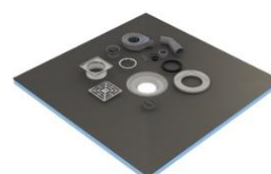
Bathboards

PRODUCTS	DIMENSIONS
BCS30	2100x600x30 mm
BCH30	770x600x30 mm



Shower bases with point drainage

PRODUCTS	DIMENSIONS
STC90	900x900x20 mm
STC100	1000x1000x20 mm
STC150	1500x1000x20 mm



Shower bases with linear drainage

PRODUCTS	DIMENSIONS
STL90	900x900x30 mm
STL100	1000x1000x30 mm
STL150	1500x1000x30 mm



Shower base without drainage

PRODUCTS	DIMENSIONS
ST100	1000x1000x20 mm



Single slope board

PRODUCTS	DIMENSIONS
SSB2035	1500x100x20/35 mm



Adhesive sealant

PRODUCTS	DIMENSIONS
Tycroc Premium FIX	290 ml
Tycroc Premium FIX	600 ml



Acrylic adhesive

PRODUCTS	DIMENSIONS
Tycroc Fast FIX	15 kg



Metal dowels

PRODUCTS	DIMENSIONS
MT850	8x50 mm
MT880	8x80 mm
MT8110	8x110 mm



430 stainless steel washers

PRODUCTS	DIMENSIONS
MW3606	36x0,6 mm



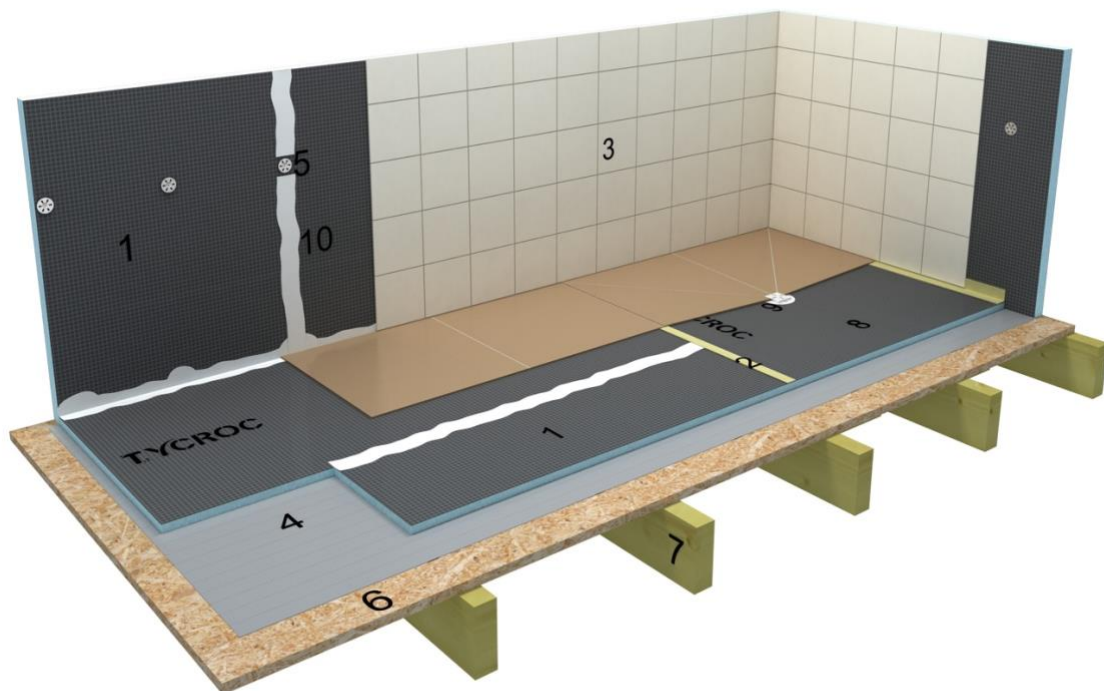
Combi screws

PRODUCTS	DIMENSIONS
MS435PC	M 4x35 mm
MS455PC	M 4x55 mm



TYCROC WATERPROOFING SYSTEM

The Tycroc waterproofing system includes floor, wall and the ceiling covering with Tycroc waterproof building boards / tile backer boards, as well as sealing / insulating the joints, washers and corners with special adhesive sealant Tycroc Premium Fix. Tycroc waterproof building boards / tile backer boards surface is hydrophobic and ready to be tiled or finished in some other way. Alternatively the joints and corners may be covered with water resistant tape and membrane.



1. Tycroc TWP building board
2. Waterproofing tape and -membrane
3. Wall- or floortile
4. Tile adhesive
5. Tycroc screw + washer
6. Wooden surface
7. Beam
8. Tycroc showe base
9. Tycroc drainage
10. Tycroc Premium FIX adhesive sealant

