

SHOWER BASE AND POINT DRAINAGE



Tycroc shower base set consists of a shower base and a linear drainage system . Both components are coordinated with each other and form one unit.

For the installation of Tycroc shower base building, the surface must be dry, inflexible and stable. Also, it must be clean of dirt, oil and other lubricants and not frozen.

CUTTING AND STORAGE

It is easy to cut the Tycroc shower base with electrical circular saw, keyhole saw, handsaw or cut-off blades. For drilling of holes, rock, metal and wood drills are suitable.

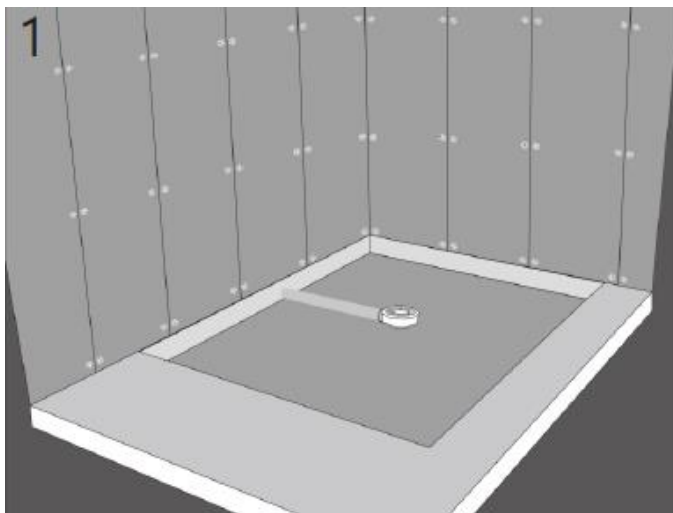
There are no special requirements to storage, but it is not recommended to store the material edgewise to avoid possible damages (broken corners, etc.)

SYSTEM COMPONENTS

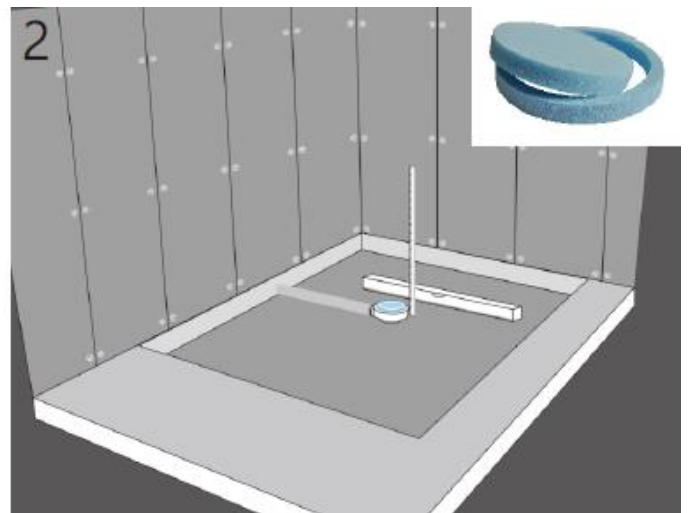
1. Shower base, h 20mm
2. Floor drain body
3. Stainless ferrule
4. Rubber sealing washer
5. Stainless thread screws (3 pcs)
6. Insert ring
7. Top piece with stainless steel rim
8. The ring of height adjustment
9. 40mm/50mm connectoin pipe
10. 115*115mm Stainless steel Grate
11. xps-protector



INSTALLATION FOR CONCRETE FLOOR

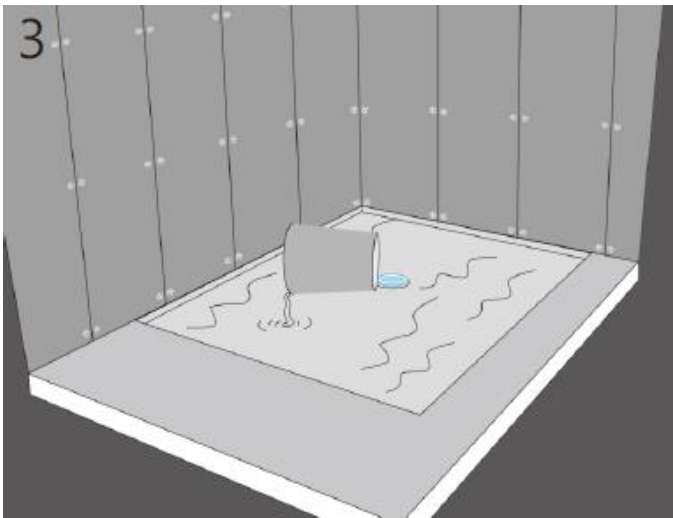


The floor drain is inserted into the waste pipe in regular way, which is already on site, and aligned centrally. For impact sound floor construction it is necessary to build in impact sound reducing material as well as flanking insulation strips.

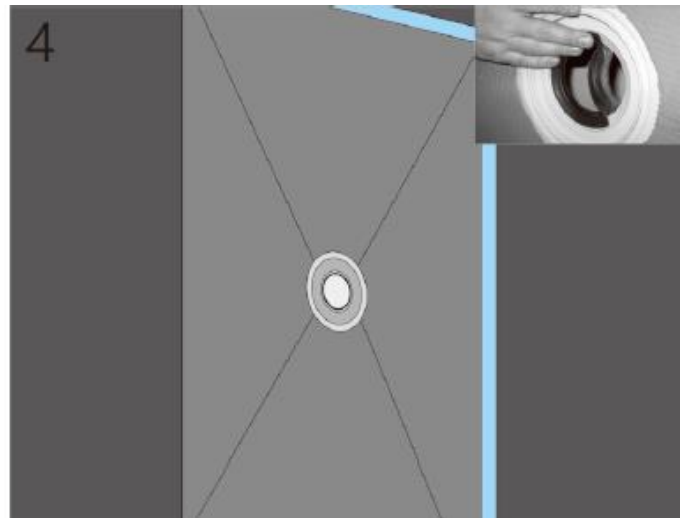


The height offset from the upper edge of the drain to the upper edge of the screed is dependent on the size of the shower base. Put the xps protector on the top of drain body to stop the mortar flow into the drain body.

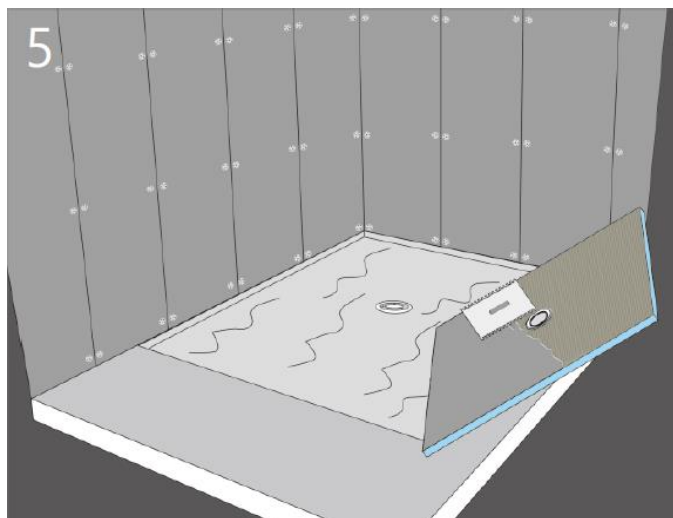
INSTALLATION INSTRUCTIONS



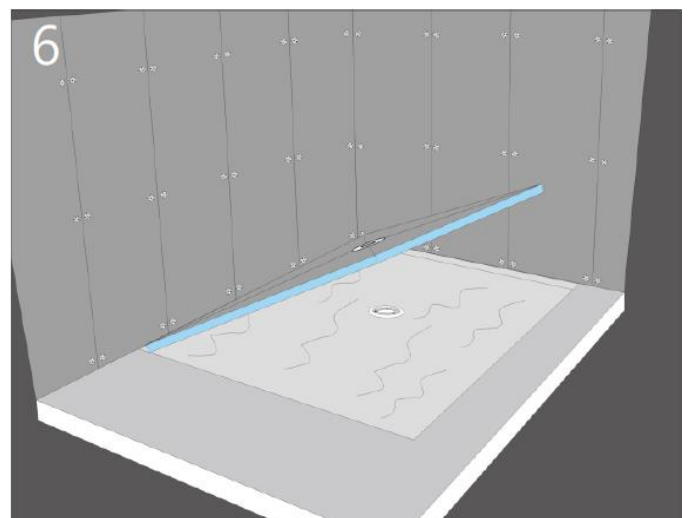
The cavity in the floor is filled out with a leveling screed (grouting plaster, quick-drying screed-ready-made mortar) or leveling filling, bound with cement, and then filled to the appropriate height offset to the screed is caused by the thickness of the shower base.



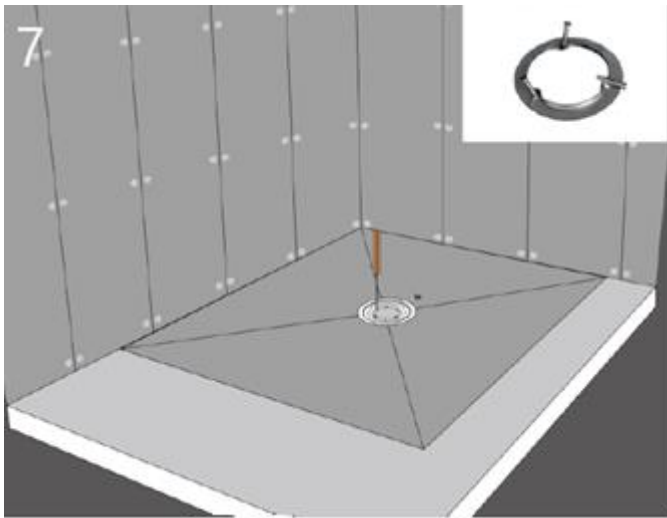
The sealing washer is inserted into the shower base. Here, the thin sealing lip lies over the plastic flange and the thick sealing lip under the flange.



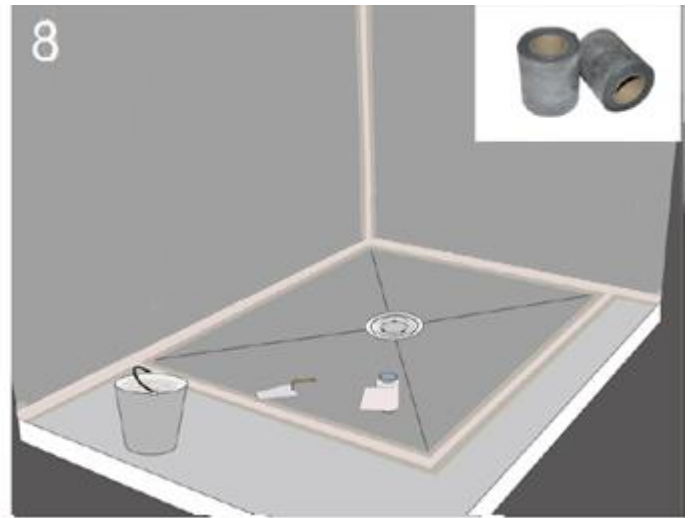
After the leveling screed has hardened, an appropriate adhesive (e.g. tile adhesive/flexible glue) is applied all over the underside of the shower base using a notched 6mm spatula.



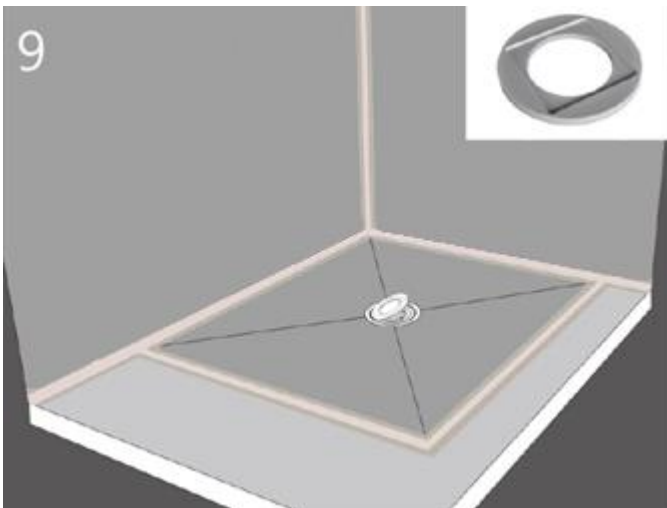
The Tycroc shower base is inserted into the screed opening so that the sealing washer lies centrally on the drain.



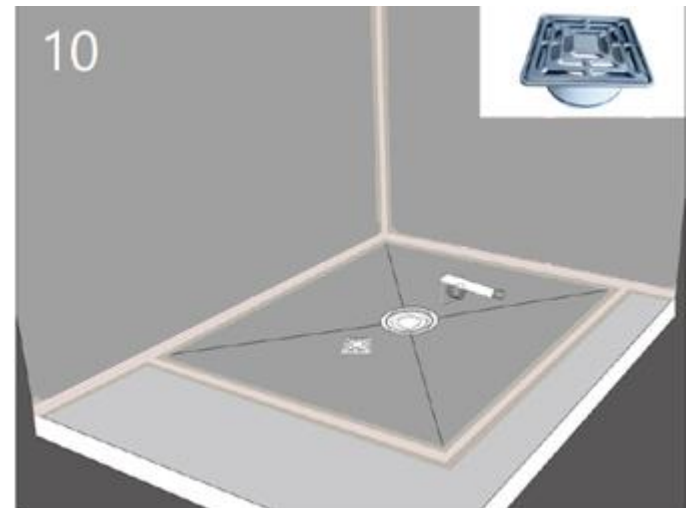
The drain is then firmly screwed to the shower base using the ferrule and the 3 thread screws. For better adhesion, the jit shower base should then be evenly weighted.



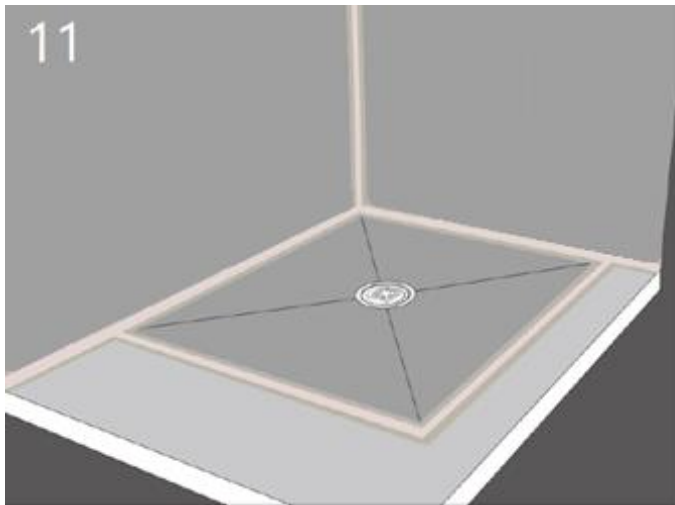
All butt joints are sealed with waterproof sealing tape and -membrane.



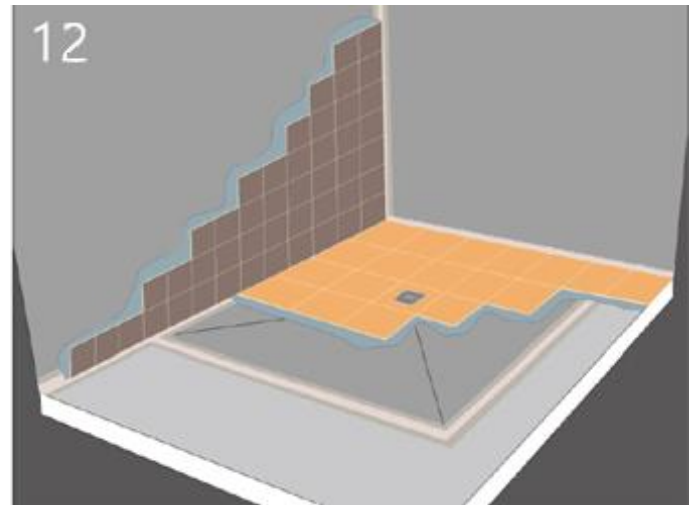
The insert ring is inserted into the shower base.



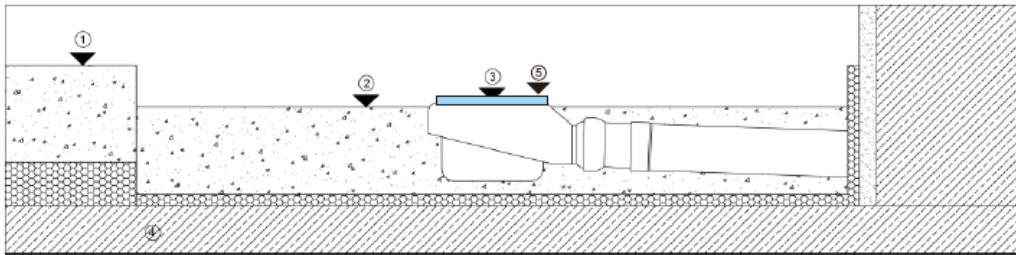
The top piece is cut to the desired height according to the thickness of the tiles.



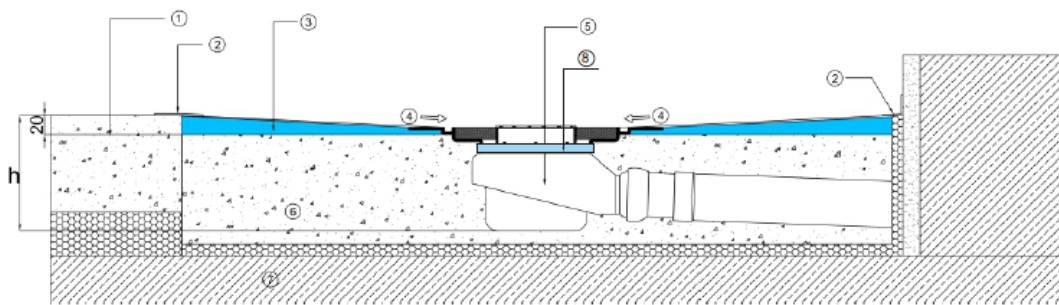
The top piece is then inserted into the shower base.



The shower base is finished and can be tiled.

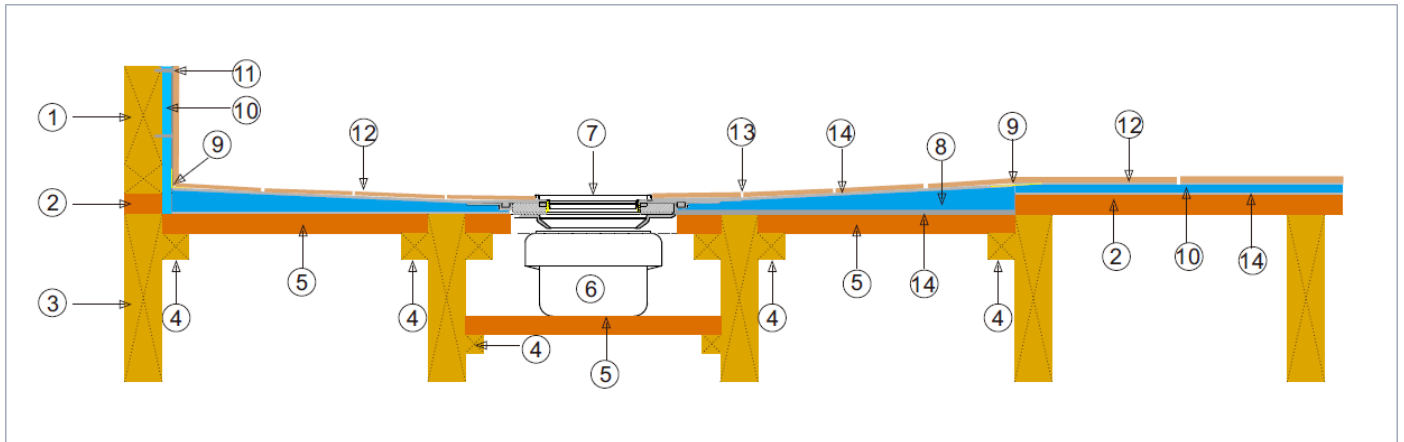


- ① Screed height 0.00 mm
- ② Leveling screed height
- ③ Floor drain height (see table)
- ④ Concrete floor
- ⑤ xps protector



- ① Screed
- ② waterproof sealing tape
- ③ 20mm shower tray
- ④ slope
- ⑤ floor drain
- ⑥ Levelling screed
- ⑦ Concrete floor
- ⑧ xps protector

INSTALLATION FOR WOODEN FLOOR



CONSTRUCTION

1. Wooden wall construction
2. $\geq 18\text{mm}$ plywood or OSB chipboard
3. Floor joist (300mm distance)
4. Support for plywood or OSB chipboard
5. $\geq 18\text{mm}$ plywood or OSB chipboard

SEALING & WATERPROOFING

9. Sealing tape and waterproofing
10. $\geq 12\text{mm}$ Tycroc TWP
11. Metal washer and screw
(covered by Tycroc Premium Fix adhesive)

SHOWER BASE

6. Floor drain body
7. 115*115mm stainless steel grate
8. Tycroc shower base

TILE COVERAGE

12. Floor tile
13. Grout
14. Flexible tile adhesive

NOTICE! The information in this leaflet is based on our experience and current materials specification. It represents no specific guarantee and the instructions for use outlined should be always observed together with considerations regarding building structure and existing building law.

DRAINAGE DETAILS

